

# FENTON

MODEL MANAGEMENT



NAOKI

Height: 6'1.5" Suit: 38 R Waist: 29" Inseam: 31" Shirt: 23" Shoes: 10.5 US Hair: Black Eyes: Black

# FENTON

MODEL MANAGEMENT



**The Art of Composition** redefines masculine elegance through ease and quiet confidence. For Fall-Winter 2026, Berluti shapes a wardrobe guided by movement and fluidity, designed for men who navigate the city with instinctive style.



## NAOKI

Height: 6'1.5" Suit: 38 R Waist: 29" Inseam: 31" Shirt: 23" Shoes: 10.5 US Hair: Black Eyes: Black

# FENTON

MODEL MANAGEMENT



## NAOKI

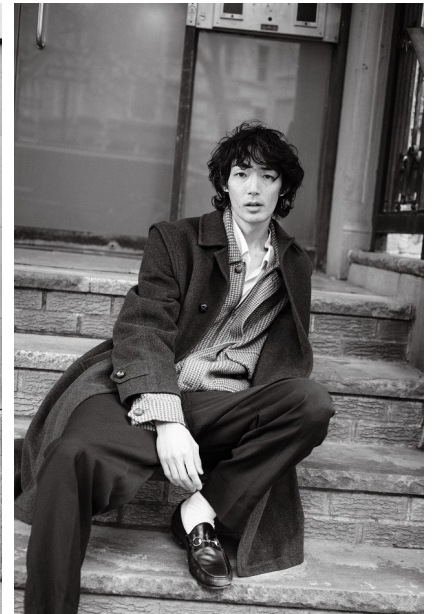
Height: 6'1.5" Suit: 38 R Waist: 29" Inseam: 31" Shirt: 23" Shoes: 10.5 US Hair: Black Eyes: Black

# FENTON

MODEL MANAGEMENT



Unity is Diversity announces  
 limited collections, organic  
 fibers and ethical practices.  
 Great options with organic  
 cotton, linen, silk, leather  
 with 100 percent recycled  
 foam and more being 50%  
 from recycled with 50%  
 percent recycled leather  
 and 30 percent recycled  
 Viscose. Eco-friendly apparel  
 outside by HENRI.



## NAOKI

Height: 6'1.5" Suit: 38 R Waist: 29" Inseam: 31" Shirt: 23" Shoes: 10.5 US Hair: Black Eyes: Black

# FENTON

MODEL MANAGEMENT



## NAOKI

Height: 6'1.5" Suit: 38 R Waist: 29" Inseam: 31" Shirt: 23" Shoes: 10.5 US Hair: Black Eyes: Black

# FENTON

MODEL MANAGEMENT

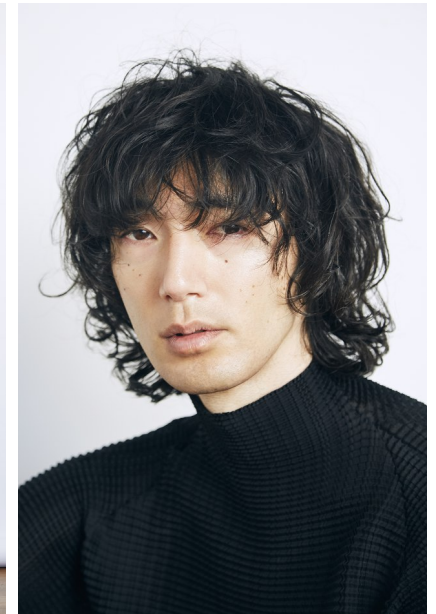


## NAOKI

Height: 6'1.5" Suit: 38 R Waist: 29" Inseam: 31" Shirt: 23" Shoes: 10.5 US Hair: Black Eyes: Black

# FENTON

MODEL MANAGEMENT



NAOKI

Height: 6'1.5" Suit: 38 R Waist: 29" Inseam: 31" Shirt: 23" Shoes: 10.5 US Hair: Black Eyes: Black

# FENTON

MODEL MANAGEMENT



Half zippers crafted from colorfully dyed corduroy. Jacket made from upcycled denim. Sneakers by **SAITOH** feature 400,000 recycled plastic bottles and recycled plastic. Hat made by **PAUL & SHANE**. **PLANTS** upper made from recycled and scuffed PVC blend.



## NAOKI

Height: 6'1.5" Suit: 38 R Waist: 29" Inseam: 31" Shirt: 23" Shoes: 10.5 US Hair: Black Eyes: Black

*FENTON*  
*MODEL MANAGEMENT*



*NAOKI*

Height: 6'1.5" Suit: 38 R Waist: 29" Inseam: 31" Shirt: 23" Shoes: 10.5 US Hair: Black Eyes: Black