

FENTON
MODEL MANAGEMENT



ANNA J

Height: 5'9" Dress: 2-4 US Bust: 34" Waist: 26" Hips: 37" Shoes: 9.5 US Hair: Red Eyes: Blue/Green

FENTON
MODEL MANAGEMENT



ANNA J

Height: 5'9" Dress: 2-4 US Bust: 34" Waist: 26" Hips: 37" Shoes: 9.5 US Hair: Red Eyes: Blue/Green

FENTON
MODEL MANAGEMENT



ANNA J

Height: 5'9" Dress: 2-4 US Bust: 34" Waist: 26" Hips: 37" Shoes: 9.5 US Hair: Red Eyes: Blue/Green

FENTON
MODEL MANAGEMENT



ANNA J

Height: 5'9" Dress: 2-4 US Bust: 34" Waist: 26" Hips: 37" Shoes: 9.5 US Hair: Red Eyes: Blue/Green

FENTON
MODEL MANAGEMENT



ANNA J

Height: 5'9" Dress: 2-4 US Bust: 34" Waist: 26" Hips: 37" Shoes: 9.5 US Hair: Red Eyes: Blue/Green

FENTON
MODEL MANAGEMENT



ANNA J

Height: 5'9" Dress: 2-4 US Bust: 34" Waist: 26" Hips: 37" Shoes: 9.5 US Hair: Red Eyes: Blue/Green

FENTON
MODEL MANAGEMENT



ANNA J

Height: 5'9" Dress: 2-4 US Bust: 34" Waist: 26" Hips: 37" Shoes: 9.5 US Hair: Red Eyes: Blue/Green

FENTON
MODEL MANAGEMENT



ANNA J

Height: 5'9" Dress: 2-4 US Bust: 34" Waist: 26" Hips: 37" Shoes: 9.5 US Hair: Red Eyes: Blue/Green

FENTON
MODEL MANAGEMENT



ANNA J

Height: 5'9" Dress: 2-4 US Bust: 34" Waist: 26" Hips: 37" Shoes: 9.5 US Hair: Red Eyes: Blue/Green

FENTON
MODEL MANAGEMENT



ANNA J

Height: 5'9" Dress: 2-4 US Bust: 34" Waist: 26" Hips: 37" Shoes: 9.5 US Hair: Red Eyes: Blue/Green

FENTON
MODEL MANAGEMENT



ANNA J

Height: 5'9" Dress: 2-4 US Bust: 34" Waist: 26" Hips: 37" Shoes: 9.5 US Hair: Red Eyes: Blue/Green

FENTON
MODEL MANAGEMENT



ANNA J

Height: 5'9" Dress: 2-4 US Bust: 34" Waist: 26" Hips: 37" Shoes: 9.5 US Hair: Red Eyes: Blue/Green

FENTON
MODEL MANAGEMENT



ANNA J

Height: 5'9" Dress: 2-4 US Bust: 34" Waist: 26" Hips: 37" Shoes: 9.5 US Hair: Red Eyes: Blue/Green

FENTON

MODEL MANAGEMENT



ANNA J

Height: 5'9" Dress: 2-4 US Bust: 34" Waist: 26" Hips: 37" Shoes: 9.5 US Hair: Red Eyes: Blue/Green



COLOR is everything

"One who knows how to appreciate color relationships, the influence of one color with another, their contrasts and dissonances, is promised an infinite variety of images."
— SONIA DELAUNAY

11 TWIN PEAKS DESIGNER: ROSEMARY DRYSDALE

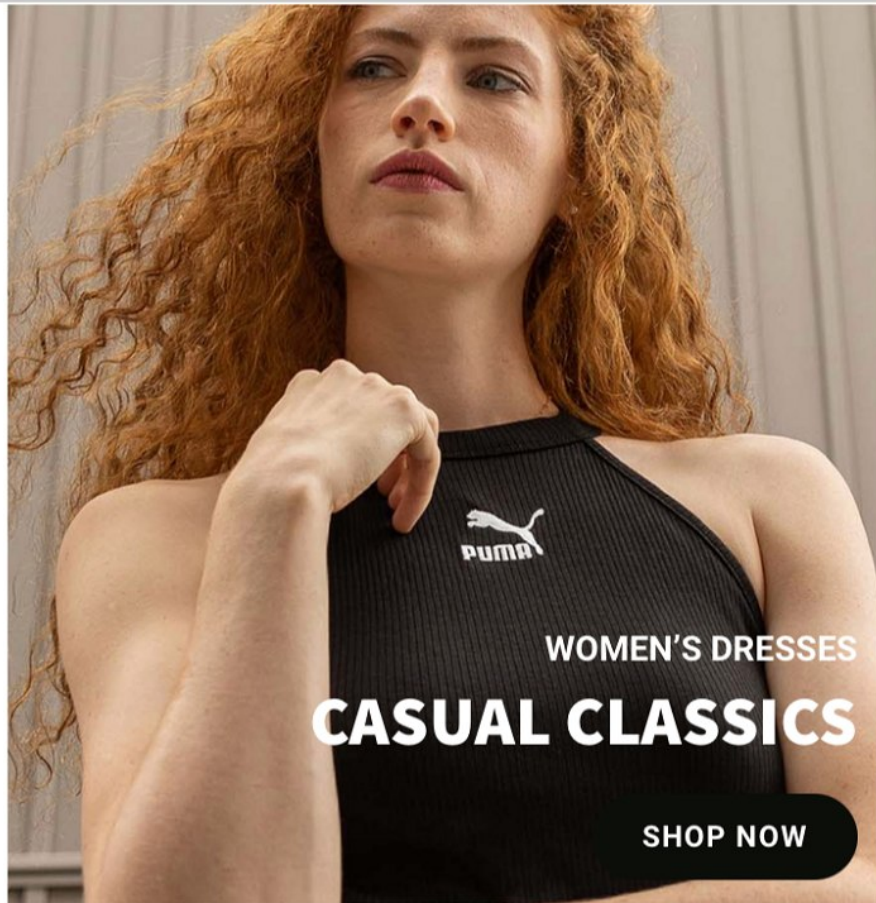
These five vibrant colors of MADVINAS — #05 Boysenberry, #04 Lilac, #03 Rosewood, #07 Azure, and #28 Bluebell — showcase the chevron stripes that strand across the stockinette background of #19 Ivory in this oversized tunic. A generous 5½"/14cm deep knit 3, purl 2 ribbing hugs the hips. Leave the side edges unsewn for a looser fit.

11

NORO 25

ANNA J

Height: 5'9" Dress: 2-4 US Bust: 34" Waist: 26" Hips: 37" Shoes: 9.5 US Hair: Red Eyes: Blue/Green



FEATURED STYLES

ANNA J

Height: 5'9" Dress: 2-4 US Bust: 34" Waist: 26" Hips: 37" Shoes: 9.5 US Hair: Red Eyes: Blue/Green

FENTON

MODEL MANAGEMENT



ANNA J

Height: 5'9" Dress: 2-4 US Bust: 34" Waist: 26" Hips: 37" Shoes: 9.5 US Hair: Red Eyes: Blue/Green

FENTON
MODEL MANAGEMENT



ANNA J

Height: 5'9" Dress: 2-4 US Bust: 34" Waist: 26" Hips: 37" Shoes: 9.5 US Hair: Red Eyes: Blue/Green

FENTON
MODEL MANAGEMENT



ANNA J

Height: 5'9" Dress: 2-4 US Bust: 34" Waist: 26" Hips: 37" Shoes: 9.5 US Hair: Red Eyes: Blue/Green

FENTON
MODEL MANAGEMENT



ANNA J

Height: 5'9" Dress: 2-4 US Bust: 34" Waist: 26" Hips: 37" Shoes: 9.5 US Hair: Red Eyes: Blue/Green