

*FENTON*  
*MODEL MANAGEMENT*



*SARAH BIEHLER*

Height: 5'9" Dress: 0-2 US Bust: 32" Waist: 23.5" Hips: 33" Shoes: 7.5 US Hair: Blonde Eyes: Blue

# *FENTON*

*MODEL MANAGEMENT*



*SARAH BIEHLER*

Height: 5'9" Dress: 0-2 US Bust: 32" Waist: 23.5" Hips: 33" Shoes: 7.5 US Hair: Blonde Eyes: Blue

*FENTON*  
*MODEL MANAGEMENT*



*SARAH BIEHLER*

Height: 5'9" Dress: 0-2 US Bust: 32" Waist: 23.5" Hips: 33" Shoes: 7.5 US Hair: Blonde Eyes: Blue



# FENTON

MODEL MANAGEMENT



*SARAH BIEHLER*

Height: 5'9" Dress: 0-2 US Bust: 32" Waist: 23.5" Hips: 33" Shoes: 7.5 US Hair: Blonde Eyes: Blue

# FENTON

MODEL MANAGEMENT



*SARAH BIEHLER*

Height: 5'9" Dress: 0-2 US Bust: 32" Waist: 23.5" Hips: 33" Shoes: 7.5 US Hair: Blonde Eyes: Blue



# *FENTON*

*MODEL MANAGEMENT*



*SARAH BIEHLER*

Height: 5'9" Dress: 0-2 US Bust: 32" Waist: 23.5" Hips: 33" Shoes: 7.5 US Hair: Blonde Eyes: Blue

*FENTON*  
*MODEL MANAGEMENT*



*SARAH BIEHLER*

Height: 5'9" Dress: 0-2 US Bust: 32" Waist: 23.5" Hips: 33" Shoes: 7.5 US Hair: Blonde Eyes: Blue



*FENTON*  
MODEL MANAGEMENT



*SARAH BIEHLER*

Height: 5'9" Dress: 0-2 US Bust: 32" Waist: 23.5" Hips: 33" Shoes: 7.5 US Hair: Blonde Eyes: Blue



# *FENTON*

*MODEL MANAGEMENT*



*SARAH BIEHLER*

Height: 5'9" Dress: 0-2 US Bust: 32" Waist: 23.5" Hips: 33" Shoes: 7.5 US Hair: Blonde Eyes: Blue

# *FENTON*

*MODEL MANAGEMENT*



*SARAH BIEHLER*

Height: 5'9" Dress: 0-2 US Bust: 32" Waist: 23.5" Hips: 33" Shoes: 7.5 US Hair: Blonde Eyes: Blue



# *FENTON*

*MODEL MANAGEMENT*



*SARAH BIEHLER*

Height: 5'9" Dress: 0-2 US Bust: 32" Waist: 23.5" Hips: 33" Shoes: 7.5 US Hair: Blonde Eyes: Blue

# *FENTON*

*MODEL MANAGEMENT*



*SARAH BIEHLER*

Height: 5'9" Dress: 0-2 US Bust: 32" Waist: 23.5" Hips: 33" Shoes: 7.5 US Hair: Blonde Eyes: Blue



# FENTON

MODEL MANAGEMENT



EMERSON  
Carolina Serra jacket  
Luv Luv NYC top  
Saint Laurent sunglasses

SARAH  
Carolina Serra jacket  
Solomeia ring  
Saint Laurent sunglasses

## ECLIPSE

photographer: Laredo Montoneri stylist: Jenn Tachavichien hair stylist: Erica Long  
makeup: Mika Omura model: Sarah Biehler and Emerson Lewis @FentonNYC

JUTE MAGAZINE  
WEBEDITORIAL

### SARAH BIEHLER

Height: 5'9" Dress: 0-2 US Bust: 32" Waist: 23.5" Hips: 33" Shoes: 7.5 US Hair: Blonde Eyes: Blue



*FENTON*  
*MODEL MANAGEMENT*



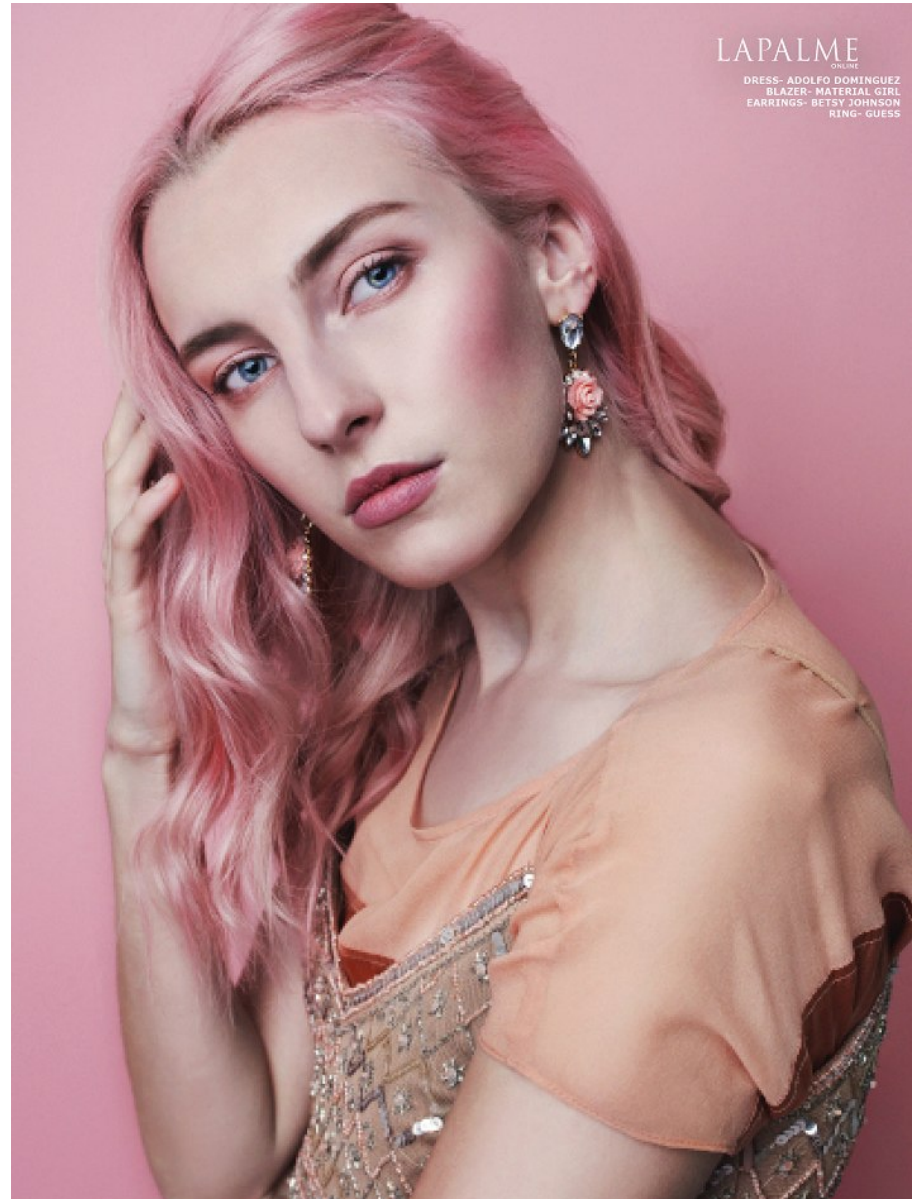
*SARAH BIEHLER*

Height: 5'9" Dress: 0-2 US Bust: 32" Waist: 23.5" Hips: 33" Shoes: 7.5 US Hair: Blonde Eyes: Blue



# FENTON

MODEL MANAGEMENT



*SARAH BIEHLER*

Height: 5'9" Dress: 0-2 US Bust: 32" Waist: 23.5" Hips: 33" Shoes: 7.5 US Hair: Blonde Eyes: Blue



# FENTON

MODEL MANAGEMENT



*SARAH BIEHLER*

Height: 5'9" Dress: 0-2 US Bust: 32" Waist: 23.5" Hips: 33" Shoes: 7.5 US Hair: Blonde Eyes: Blue

+ VUE ON FASHION

# Avant-Garde Aesthetic

A FASHION COMPOSITION  
BY HELEN CASTILLO

**I** was raised in a household of artists. My mother and father met in the '80s in New York City doing silkscreen for an advertising company and both come from Fine Arts backgrounds. After relocating to Weehawken, my parents' first apartment had a walk-in closet that also doubled as an art studio. And while I've always experimented with illustration and painting, I feel a strong connection to putting a hand to paper, and more recently, fabric. For my latest project, I commissioned local Brooklyn artist Eric Yevak to create a one-of-a-kind painted fabric that was able to lend itself to interpretation. Something that represented the versatility of art and was also desirable. Yevak and I layered multiple colors and patterns over one another, creating a juxtaposition of hard and soft elements which complimented the Avant-Garde look I was inspired to create. I wanted to push the absolute boundaries and design a look that from every angle had three qualities: texture, dimension and surprise. Resulting in a form-fitting, scarlet plaid gown contrasted with voluminous black tulle, cropped sleeves and carefully placed star detailing.



24 VUENJ.COM



**SARAH BIEHLER**

Height: 5'9" Dress: 0-2 US Bust: 32" Waist: 23.5" Hips: 33" Shoes: 7.5 US Hair: Blonde Eyes: Blue



# *FENTON*

*MODEL MANAGEMENT*



*SARAH BIEHLER*

Height: 5'9" Dress: 0-2 US Bust: 32" Waist: 23.5" Hips: 33" Shoes: 7.5 US Hair: Blonde Eyes: Blue

*FENTON*  
MODEL MANAGEMENT



*SARAH BIEHLER*

Height: 5'9" Dress: 0-2 US Bust: 32" Waist: 23.5" Hips: 33" Shoes: 7.5 US Hair: Blonde Eyes: Blue